

Beginner's Guide to Dash Mining – How to Mine DASH or X11 Ats on a D3 ASIC Miner

BY [IAN](#) ON DECEMBER 4, 2017 [MINING](#)

Getting started mining with the Video Guide:

Watch this video to get started with your D3 – mining for BTC on Nicehash, or mining X11 alts:



The DASH / X11 Mining Text Guide:

First, a word about ASICs:

Unlike GPU mining on coins like Ethereum, Zcash and Monero, some coins like Bitcoin and Dash are mined with ASIC (Application Specific Integrated Circuits) Miners. These powerful machines are hundreds of times more powerful than GPU rigs and are simply designed to do one thing – hash the algorithm they are programmed for.

Now some people might ask why you wouldn't just buy the coins directly vs. buying a miner and running it. The answer is that these machines can be quite profitable over the long run and will continue to bring in mined coins for many months. That said, they typically do have a finite life cycle that is shorter than GPU rigs due to the nature of what ASIC miners tend to do a coin/algorithm once released – they cause the network hashrate to skyrocket, and with it the difficulty, meaning everyone hashing gets less rewards in terms of coins.

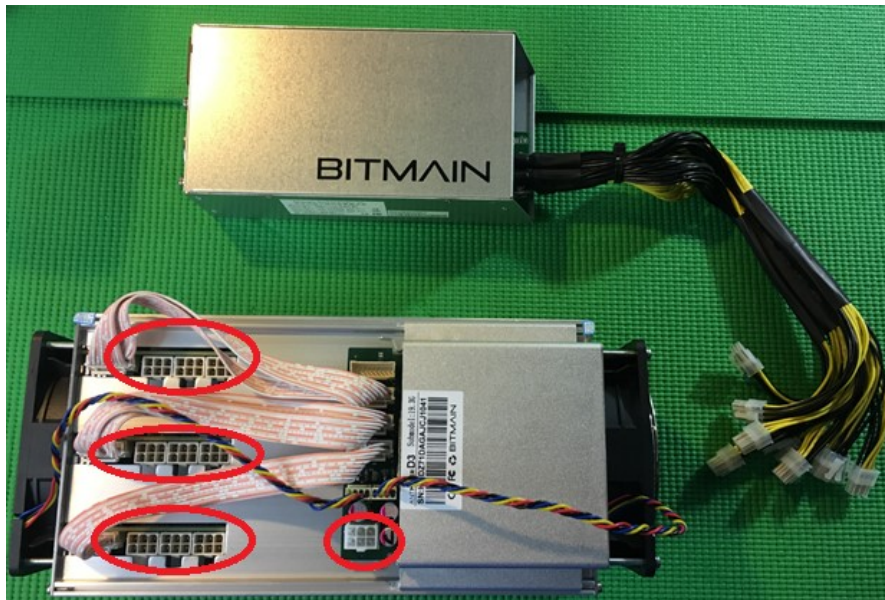
It can still be offset by coins gaining in value which can still make them earn more over time, but this should be noted as in a bear market when coin values are falling many folks can't afford to even run the miner as you have increased difficulty = less coins mined, and less coins value which compounds the issue.

When these D3's were purchased back in the late summer timeframe they were showing earning calculations of \$150-170 PER DAY. I figured conservatively they would drop by two thirds down to around \$50 per day and would be quite profitable. I grossly underestimated the impact these ASICs would have on DASH and other X11 coins. By the time I received my ASIC, profitability was down to around \$5 per day. It's lately come back up a bit to around \$6-8 per day, but still – that's a pretty drastic decline from the allure of the purchase.

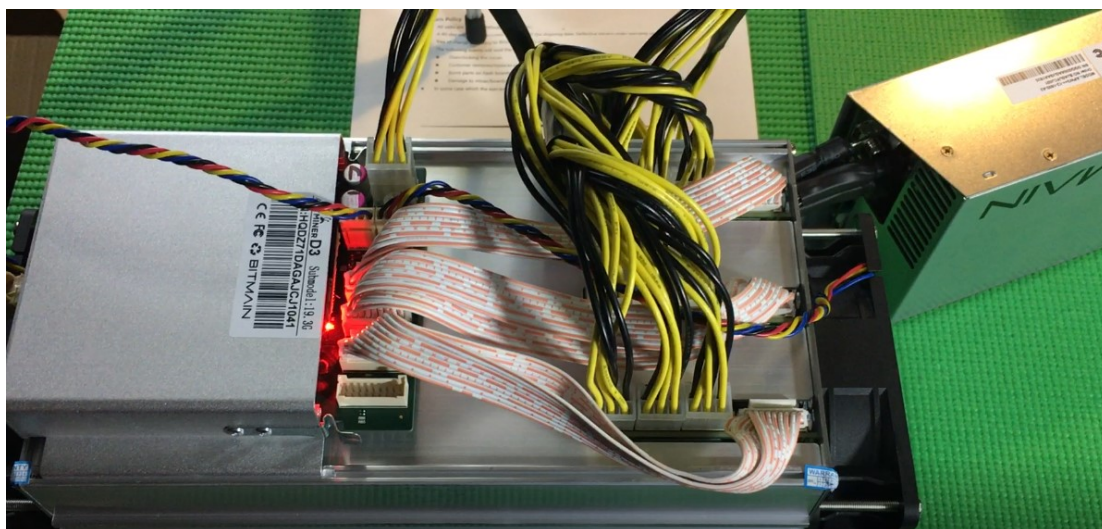
Let's walk through setting the miners up and then I'll close with some thoughts on how to optimize their usage to maximize our profits...

Setting Up Your Bitmain ASIC Miner:

- 1) Unbox your D3, Power supply and cables



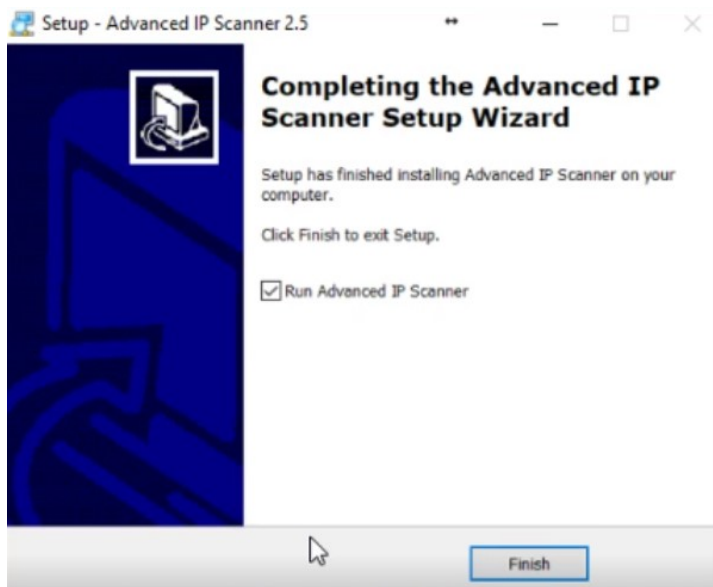
- 2) Hook everything up - all 10 PCI-e connections (3 on each hashing board and 1 on controller), the ethernet cable from the D3 to your router, and the power cord and it should power on automatically.



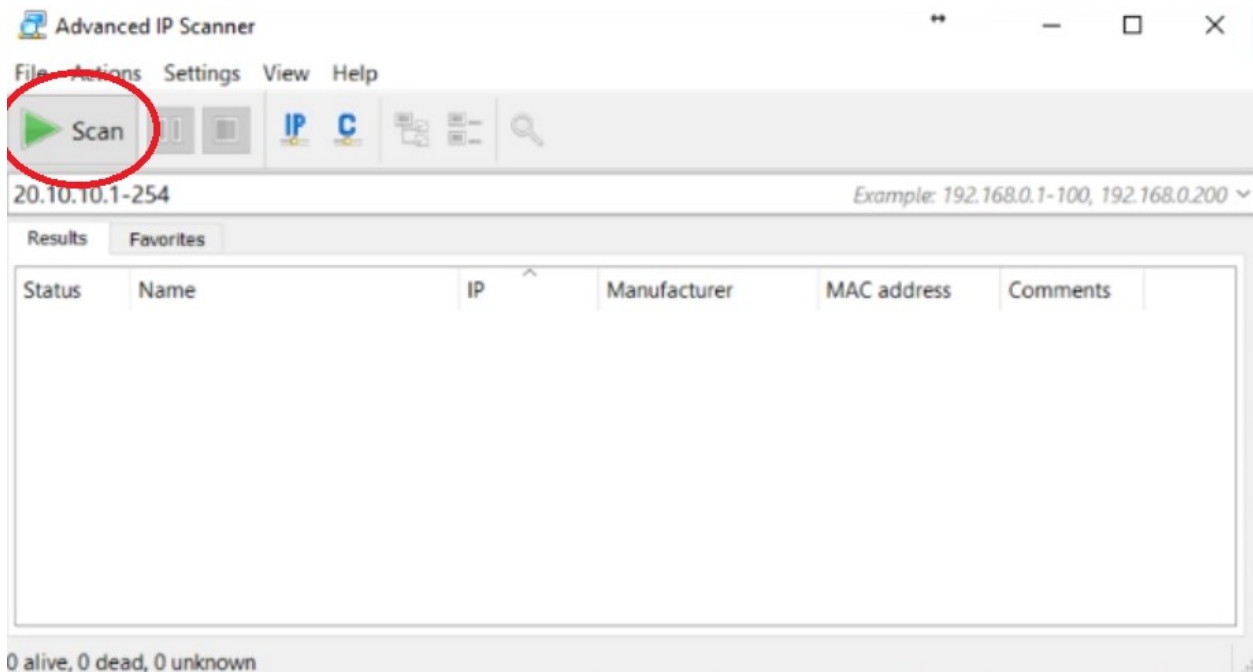
- 3) Download the free Advanced IP Scanner tool @

www.advanced-ip-scanner.com/

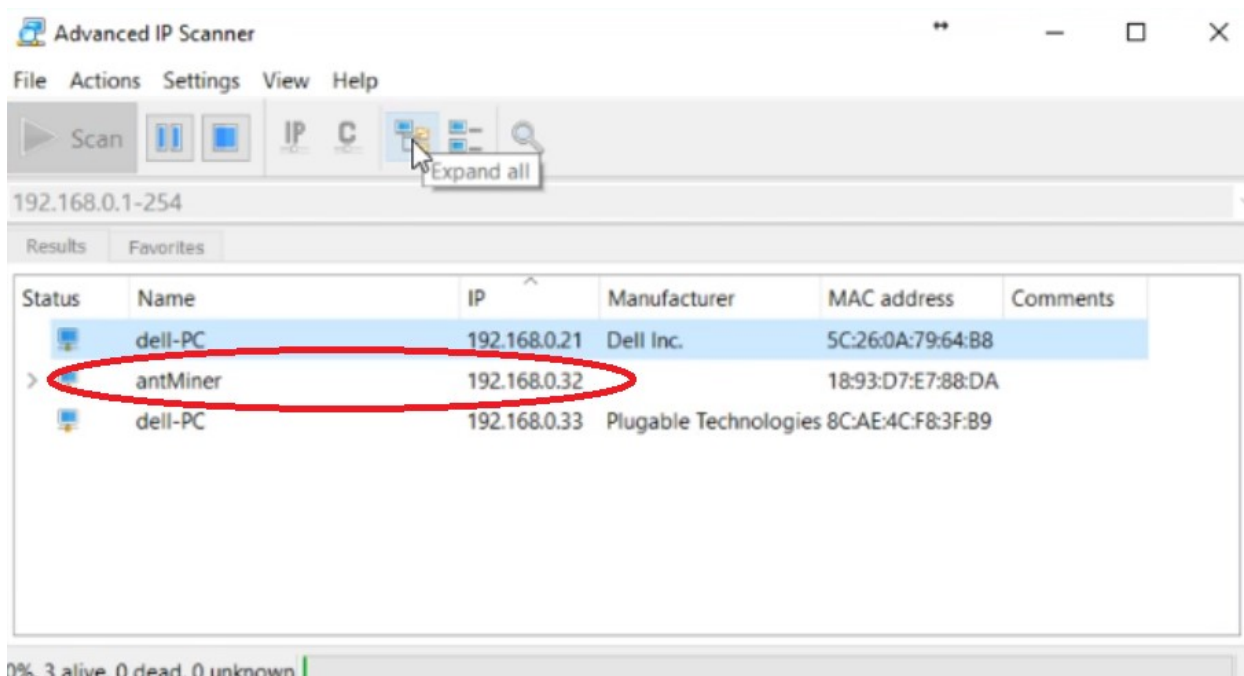
4) Install and Run Advanced IP Scanner



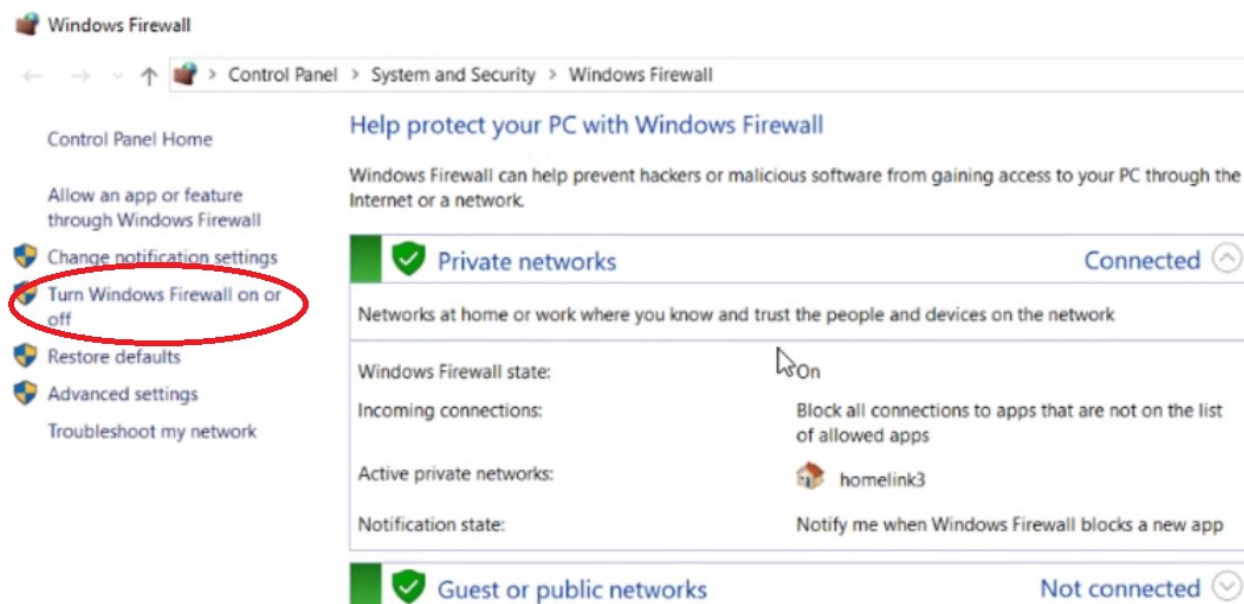
5) Start scanning with the Advanced IP Scanner (hit “Scan”)



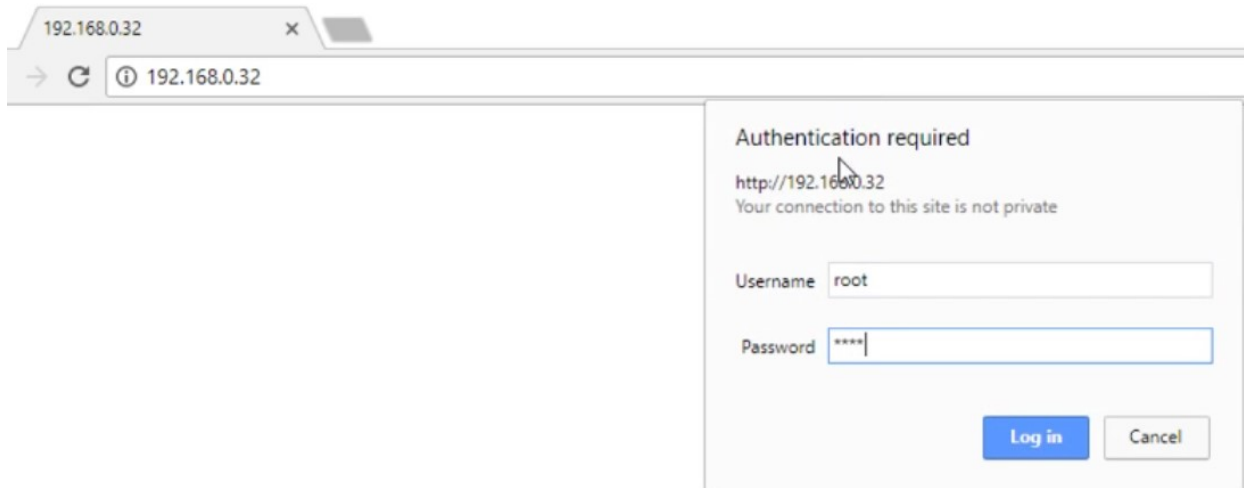
6) Look for “Antminer” and note the IP Address (Example IP - 192.68.0.8)



- 7) If AntMiner is found as shown above, go to Step 8. If it does not show up, stop the Scan and turn off Windows Firewall.



- 8) Then Start the Advanced IP Scanner Scan again.
- 9) Once the Antminer IP is found go to that IP in your Browser - Example IP - 192.68.0.8 - (use Chrome, etc.)
- 10) Login with “root” and “root” for both the username and password



- 11) Turn Windows Firewall back on if you had to turn it off in step 7
- 12) If mining for BTC on Nicehash – use the following servers on the “Mining Configuration” page of your Antminer (quick shout to GaryCutri for his [Nicehash Setup guide](#) on Steemit):

Pool URL:

stratum+tcp://x11.usa.nicehash.com:3336#xnsu

WORKER: *walletaddress.workername*

PASSWORD: x

(Note, you can use any bitcoin address you control and any workername, just put a period in between. Servers are usa, eu, and jp in the stratum address below just use your optimal one based on your location.)

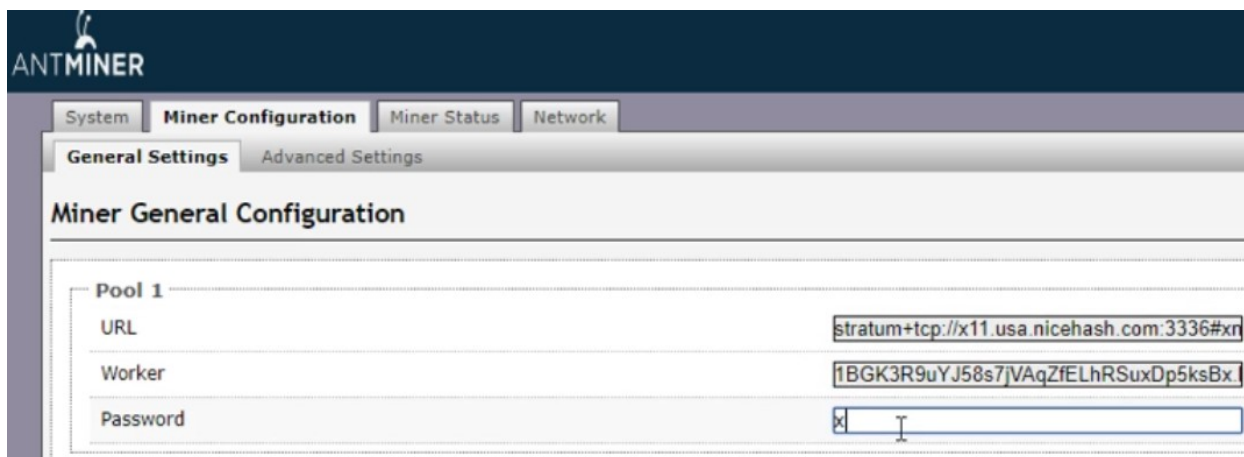
Example:

Pool URL: stratum+tcp://x11.usa.nicehash.com:3336#xnsu

WORKER: 37UPzLMoFE7i41qChPPXh7RxPprXWYmZBy.AntminerD3

PASSWORD: x

- 13) So on your Antminer “Mining Configuration” page, it looks like this:

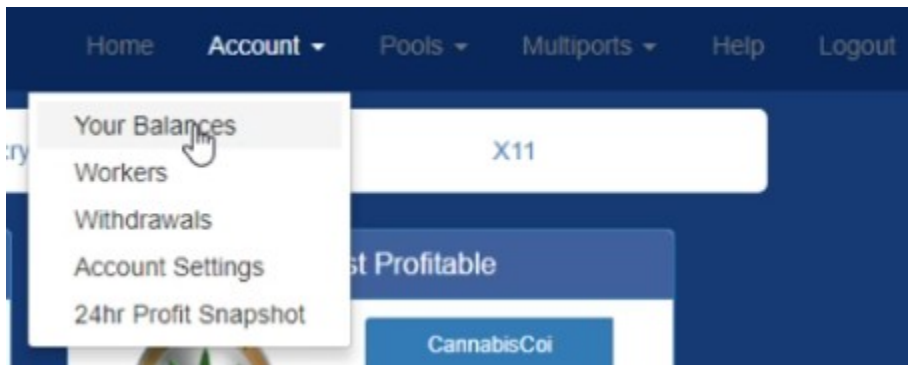


- 14) Then hit “Save & Apply” in the bottom right and you’re off and mining BTC!

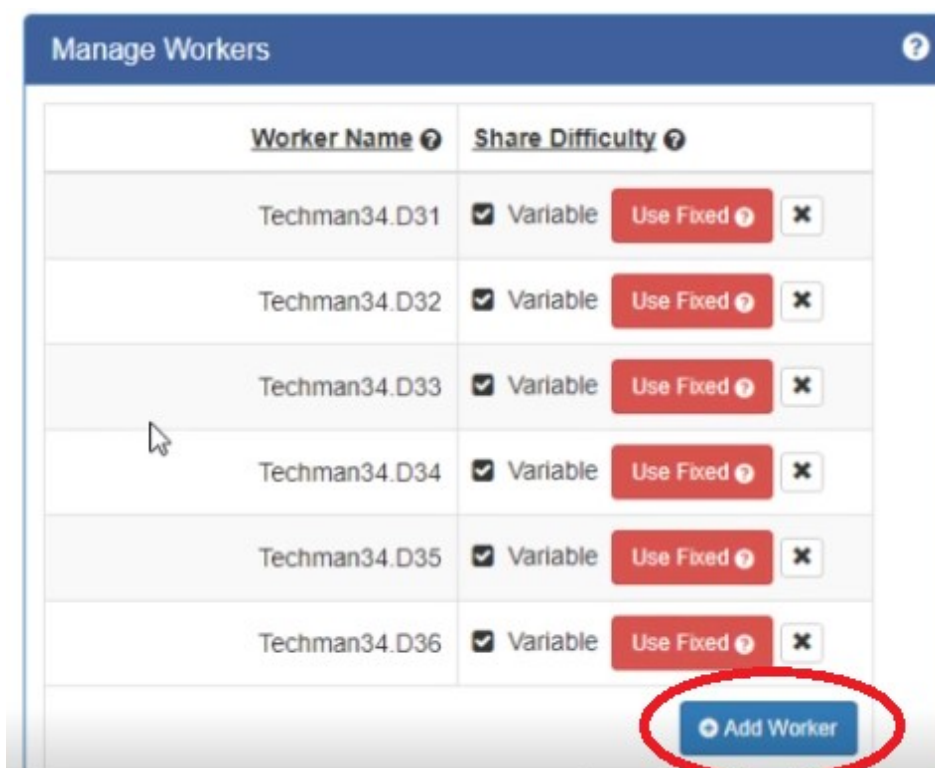


15) If mining for X11 altcoins (Dash, MUE, etc.) – I recommend Multipool - <https://www.multipool.us/>

16) Register, Login, then go to Account > Your Balances and enter in the wallet addresses for the Altcoins you mine. (Recommend Dash, MUE, and CANN)



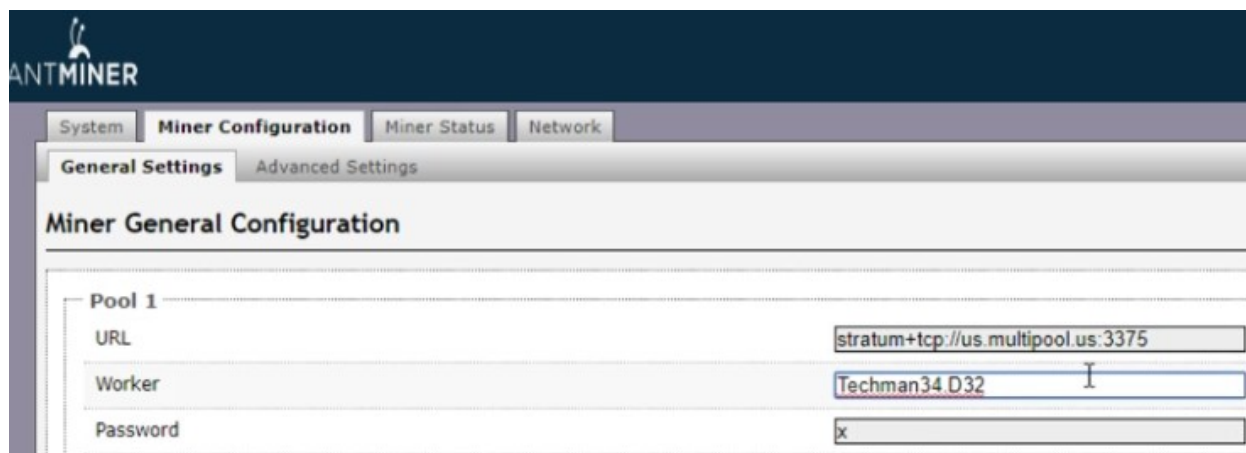
17) Then go to Account > Workers and add a worker



- 18) Then go to Home and scroll down to find the server URL's of the coin you want to mine and copy the server url

	CannabisCoin	stratum+tcp://us.multipool.us:3375 stratum+tcp://eu.multipool.us:3375
	DigiByte (Scrypt)	stratum+tcp://us.multipool.us:3351 stratum+tcp://eu.multipool.us:3351
	DigiByte (SHA256)	stratum+tcp://us.multipool.us:3360 stratum+tcp://eu.multipool.us:3360
	Dash	stratum+tcp://us.multipool.us:3371 stratum+tcp://eu.multipool.us:3371
	GameCredits	stratum+tcp://us.multipool.us:3336 stratum+tcp://eu.multipool.us:3336
	Litecoin	stratum+tcp://us.multipool.us:3334 stratum+tcp://eu.multipool.us:3334
	MonetaryUnit	stratum+tcp://us.multipool.us:3342 stratum+tcp://eu.multipool.us:3342

- 19) Then go back to your Antminer Miner Configuration page and paste in that stratum URL and then copy and paste your worker name – password is x again.



20) Then hit “Save & Apply” again in the bottom right and you’re off and mining your X11 Altcoins!



That’s it – you’re all set! If you run into issues, watch the video above where you can pause it along the way at the various steps as needed. I have broken it down into many steps above, but the entire process really only takes about 10 minutes to get completely setup and mining.

Profit Considerations:

I recommend mining the smaller coins (MUE & CANN) because they have the most likelihood to go up by several multiples, like 3-5 times or more. Dash or BTC might go up of course too and have been lately, but they are up so high right now already it’s not likely to double or triple anytime soon. They have such large market caps that it takes that much more money to impact the overall value for a triple, 5x or 10x move.

But CANN for example has a market cap of less than \$5 Million (compared to Dash at almost \$6 Billion!) so a single whale pumping the market could easily create a 3-5x spike, which means that the CANN coins you were mining at a calculation of roughly \$6 a day in profit are now worth the equivalent of \$18 a day on a 3x move, or \$30 a day on a 5x move, meaning your ROI time just got cut down to like 2-4 months, which is very good.

I could be wrong of course so do your own research and mine accordingly, and enjoy!

That’s it for the beginner’s guide on mining with your D3 ASIC Miner from Bitmain! We hope you have found this guide useful! And if you run into any issues or have questions, please comment below here in the blog or in the video comments and we will try to help.

If you are interested in taking your crypto mining to the next level from here, sign up at [Crypto Mining Academy](#), where I go into massive depth and detail at every step of mining in a comprehensive course.

Happy Mining!

Ian a.k.a. Techman34 (on the Ethereum forums) or contact me on Twitter at [@cryptocg](#)

[Download a handy PDF Version of this D3 Mining Guide here.](#)